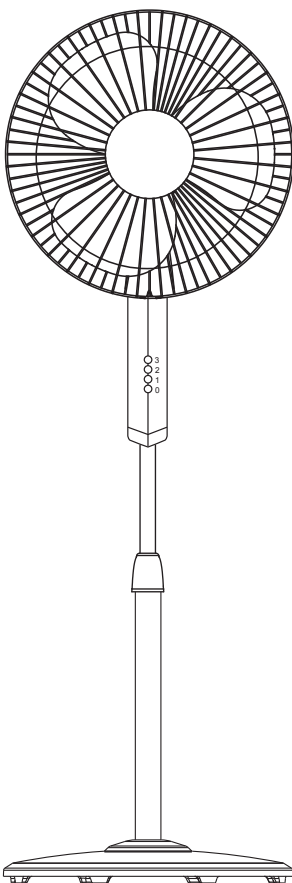




OWNER'S MANUAL

16" STAND FAN

MODEL: RM/272



READ AND SAVE THESE INSTRUCTIONS

Attention: Pictures in the IM are for reference only.

CAUTION

Read Rules for Safe Operation and Instructions Carefully.

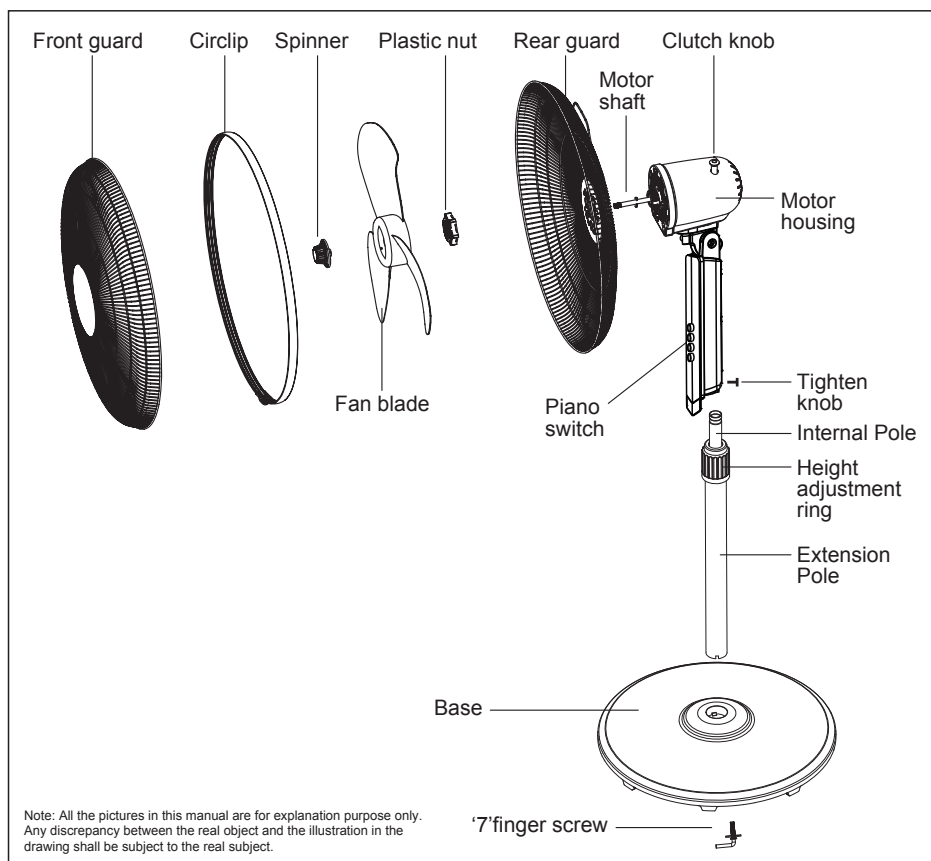
WARNING

1. If the supply cord is damaged, it must be replaced by manufacturer or its service agent or a similarly qualified person in order to avoid a hazard.
2. Indoor use only.
3. To protect against the risk of electrical shock, do not immerse the unit, cord or plug in water or other liquid.
4. This appliance is not intended for use by persons (including children) with reduced physical, sensory or mental capabilities, or lack of experience and knowledge, unless they have been given supervision or instruction concerning use of the appliance by a person responsible for their safety. Young children should be supervised to ensure that they do not play with the appliance.
5. When the appliance is not in use and before cleaning, unplug the appliance from the outlet.
6. Keep electrical appliances out of reach from Children or infirm persons. Do not let them use the appliances without supervision.
7. When the fan was assembled, the rotor blade guard shall not be taken off anymore
 - Prior cleaning unplug the fan
 - The rotor guard shall not be disassembled/opened to clean the rotor blades.
 - Wipe the fan enclosure and rotor blade guard with a slightly damp cloth.

RULES FOR SAFE OPERATION

1. Never insert fingers, pencils, or any other object through the grille when fan is running.
2. Disconnect fan when moving from one location to another.
3. Be sure fan is on a stable surface when operating to avoid overturning.
4. DO NOT use fan in window, rain may create electrical hazard.
5. Indoor use only.

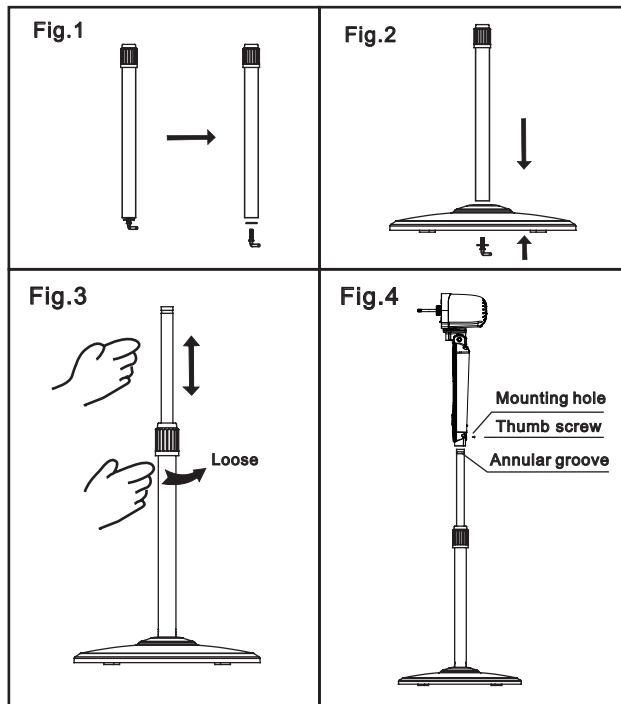
PART FIGURE



ASSEMBLY OF BASE & COLUMN UNIT

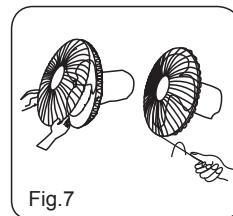
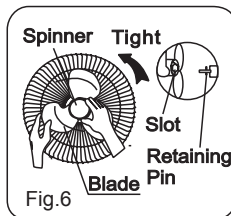
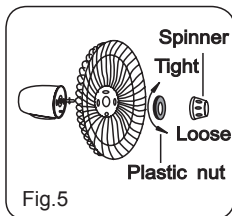
1. Unscrew the "7" finger screw from the Extension Pole. (Fig.1)
2. Insert the extension pole in the base and tighten the "7" Finger screw. (Fig.2)
3. From the extension pole loosen the height adjustment ring and adjust the internal pipe to the desired height. (Note: If you can't find the internal pole, it slides inside the extension pole. You can pull it out from the extension pole.) (Fig.3)
4. To attach the head unit to the extension pole, loosen the thumb screw on the bottom of the head unit. Place the head unit on the extension pole and tighten the thumb screw in alignment with the groove on the internal pole. (Fig.4)

CAUTION: Height adjustment ring must be fully fastened before the assembly of the motor section to the extension pole.



GUARD & FAN BLADE ASSEMBLY

1. Unscrew the spinner clockwise (or take the spinner out from the bag) and the plastic nut counter clockwise to remove both of them. Fix the rear guard to the motor then tighten the plastic nut again. (Fig. 5)
2. Insert the blade into shaft, and make sure the rotor shaft pin is fitted into groove of the blade. Turn the spinner counter clockwise to tighten the blade. (Fig. 6)
3. Fix the front guard and the rear guard with circlip and then tighten the fan guard locking screw and nut. (Fig. 7)



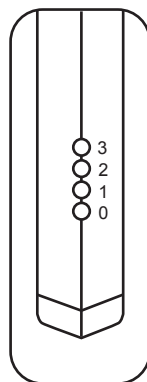
OPERATING INSTRUCTIONS

1. SPEED CONTROL

Fan speed is controlled by the switch :
0-1-2-3 (Off-Low-Medium-High)

2.OSCILLATION CONTROL

To make the fan oscillate, press the clutch knob located on the top of the motor housing. To get the directional airflow, pull the clutch knob up to its initial position.



To adjust the air flow upward or downward, push the guards lightly to the desired direction.

4.HEIGHT ADJUSTMENT

The height of the fan can be adjusted by loosening the locknut carefully raising or lowering the fan and firmly re-tightening the locknut.

MAINTENANCE INSTRUCTION

The fan requires little maintenance. Do not try to fix it by yourself. Refer it to qualified service personnel if service is needed.

1. Before cleaning and assembling, fan must be unplugged.
2. To ensure adequate air circulation to the motor, keep vents at the rear of the motor free of dust. Do not disassemble the fan to remove dust.
3. Please wipe the exterior parts with a soft cloth soaking a mild detergent.
4. Do not use any abrasive detergent or solvents to avoid scratching the surface.
Do not use any of the following as a cleaner: gasoline, thinner, bending.
5. Do not allow water or any other liquid into the motor housing or interior parts.

CLEANING

1. Be sure to unplug from the electrical supply source before cleaning.
2. Plastic parts should be cleaned with a soft cloth moisten with mild soap.
Thoroughly remove soap film with dry cloth.