

## SPECIFICATION

Weight range: Min 2kg  
Max 150kg  
Graduation: 0.1kg

## CAUTION



Keep the scale  
off water



Keep the scale  
with care



Don't put it on uneven  
floor while weighing



Don't step on the  
edge of the scale



BATHROOM SCALE

RM/285

User Manual

## ATTENTION

Thanks for choosing Ramtons scale. To ensure proper operation, please read through the instruction manual carefully.

## HELPFUL TIPS

Your scale is a precision electronic instrument. One of the hardest things to weigh is the human body because it is always in motion. To ensure reliable readings, always try to place your feet on the scale in the same place and stand still.

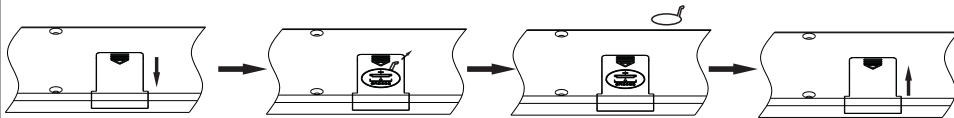
Treat your scale with care. Do not drop it or jump on it. The scale is durable, but misuse or abuse may render the electronic sensors inoperable.

Never submerge the scale under water. To clean the scale surface, use either a damp cloth or glass cleaner.

Do not open or take apart the scale or its components.

## HOW TO OPERATE

1. Open the battery cover at the backside of the scale.
2. If there is a battery in the case, take the insulator out. Otherwise insert 1 x CR2032 battery to the battery case. Then close the battery cover.



3. Select the weight unit you want among kg/lb/st.



4. Place the scale on a hard and even floor.
5. If there is a number other than 0.0kg displayed, please wait for about 20 seconds until it automatically turns off; if there is nothing on the screen, please overlook next step.
6. With your foot, firmly tap the scale until "8888" displayed.

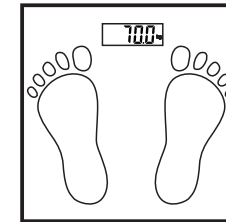


## HOW TO OPERATE

7. Important! Wait for "0.0" to be displayed before stepping on the scale.



8. Step on the scale (the display will flicker) and stand still, your weight measurement will be shown on the screen.



9. Step off the scale, when "0.0" appears you can measure again.

Note: The scale will turn off automatically after "0.0" appears 10 seconds if you don't step on the scale.

## TROUBLESHOOTING GUIDE

### If you experience any difficulty in use of the scale:

1. Check the battery is correctly fitted.
2. Check that you have selected your preference of kg/lb/st.
3. Check whether the scale is on a flat, level floor and not touching against a wall.
4. Ensure whether you do not step on the scale until the display shows "0.0".
5. If, when you tap the scale to activate it, there is no display at all or "Lo" is displayed- try one new battery.



Replace battery

6. If "O-Ld" is displayed, the scale has been overloaded.



Weight overload