



FOOD PROCESSOR

INSTRUCTION MANUAL



Model: RM/323

Read this booklet thoroughly before using and save it for future reference

IMPORTANT SAFEGUARDS

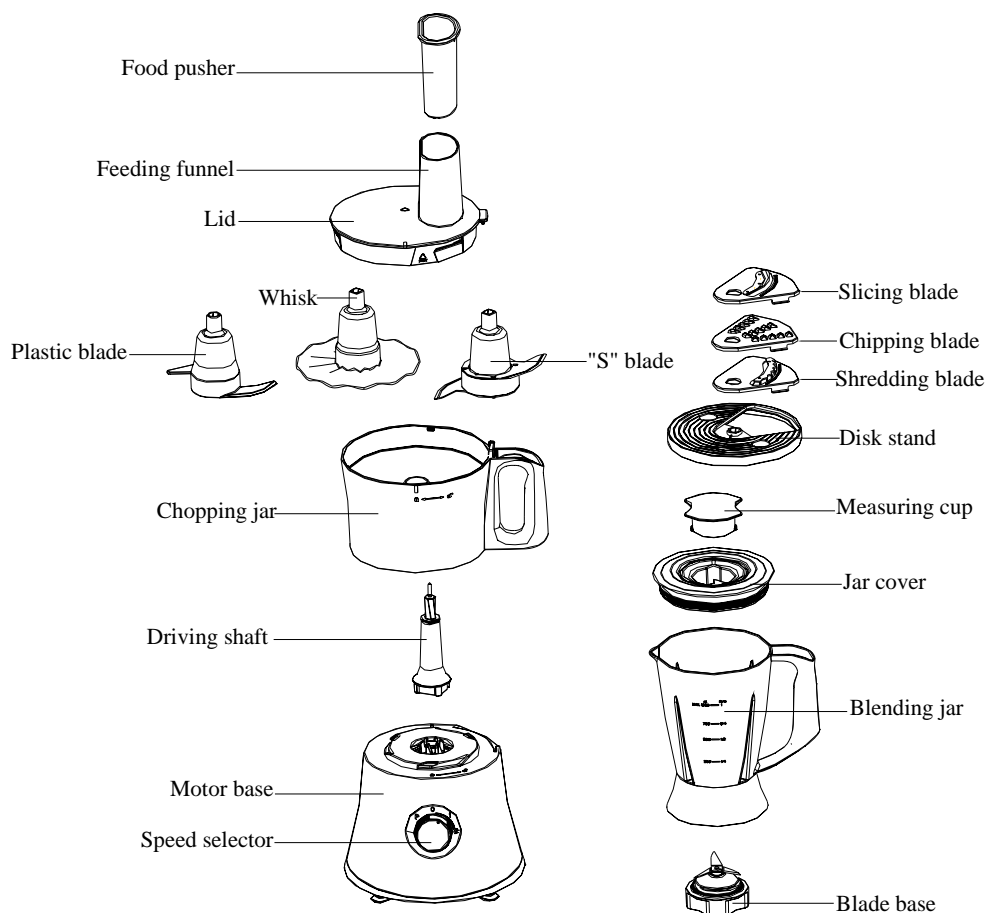
Before using the electrical appliance, the following basic precautions should always be followed including the following:

1. Read all instructions, and save it for future reference.
2. Before using, check that the voltage of wall outlet corresponds to that shown on the rating plate.
3. Do not operate any appliance with a damaged cord or plug or after the appliance malfunctions, or is dropped or damaged in any manner. Bring it to a qualified technician for examination, repair or electrical or mechanical adjustment.
4. Do not let cord hang over edge of table or counter.
5. To protect against risk of electrical shock, do not put the motor base into water or other liquid. To disconnect, turn any control to “off”, then remove plug from wall outlet by grasping the plug, not the cord.
6. Keep hands and utensils away from moving blades or discs while processing food to reduce the risk of severe injury to persons or damage to the Food Processor. A scraper or spatula may be used, but must be used only when the Food Processor is not running.
7. Avoid contacting moving parts.
8. Never feed food by hand. Always use food pusher.
9. Before removing the lid from the jar from the power unit, switch off the unit, wait until the blades have come to a complete stop.
10. Do not use fingers to scrape food away from discharge disc while appliance is operating. Cut type injury may result.
11. Be certain lid is securely locked into place before operating appliance.
12. Be sure to switch off the appliance after each use of your food processor. Make sure the motor stops completely before disassembling.
13. Do not put your fingers or other objects into the unit opening while it is in operation. If food becomes lodged in opening, use food pusher or another piece of fruit or vegetable to push it down. When this method is not possible, turn the motor off and disassemble to remove the remaining food.
14. Do not attempt to defeat the cover interlock mechanism.
15. The metal blades and disk is extremely sharp, handle with care. Always hold the blade assembly by the finger grip or stem, away from the cutting edge, both when handling and cleaning.
16. To reduce the risk of injury, never place processing blade or circle blade ass’y on drive shaft without the processing jar locked properly in place.
17. Do not leave this appliance unattended during use.
18. If this appliance falls or accidentally becomes immersed in water, unplug it immediately. Do not reach into the water! Do not use this appliance after it has fallen into or becomes immersed in water.
19. To reduce the risk of injury to persons or property, never use this appliance in an unstable position.
20. Do not use this appliance for other than its intended use.
21. The use of attachments not recommended or sold by the manufacturer may cause fire, electric shock or injury.

22. Do not use outdoors.
23. Unplug from outlet when not in use, before putting on or taking off parts, and before cleaning.
24. **Caution:** never immerse in water, unplug before inserting or removing parts.
25. **CAUTION: DO NOT OPEN LID UNTIL BLADES STOP.**
26. The appliance can be used by children aged from 8 years and above and persons with reduced physical, sensory or mental capabilities or lack of experience and knowledge if they have been given supervision or instruction concerning use of the appliance in a safe way and understand the hazards involved. Children shall not play with the appliance. Cleaning and user maintenance shall not be made by children unless they are older than 8 and supervised.
27. Keep the appliance and its cord out of reach of children less than 8 years.
28. Save these instructions.

HOUSEHOLD USE ONLY

KNOW YOUR FOOD PROCESSOR



BEFORE FIRST USE

Before first use, carefully unpack the food processor and its attachments and remove any package material or label or stickers. Clean all the parts except the motor base following the instructions in **CLEANING AND MAINTENANCE**. Handle the "S" blade or circle blade ass'y with extreme care as they are sharp. The food processor can be used for kneading, beating and whisking, chopping the meat or vegetable and fruit, shredding, slicing and chipping the vegetables or potatoes, blending the smooth soup, sauces, creams, fruit purees, milk and so on, using different accessory to perform different task.

BLENDING

1. Place the blending jar on the Motor Unit from the unlock position and slightly turn the jar clockwise until the blending jar locks into the lock position on the motor base. If the blending jar is not or is badly positioned, the blender will not work.
2. Peeled or cored the fruit or vegetables and then cut it into small dices, put the food piece into the jar. Usually certain amount of purified water has to be added to facilitate the smooth running of appliance. The amount of mixture should not exceed the max level as indicated on the blending jar.

Note: never use boiling liquids or run the appliance empty. And the blending jar can not be used for blending meat.

3. Replace the Jar Cover on the jar and ensure that the Jar Cover can fix with the jar securely.
4. You may add ingredient into the jar through the center opening of Jar Cover during



operation, then replace Measuring Cup if necessary. Let the tabs of Measuring Cup align with the grooves of Top Cover, put down and turn in clockwise by 90° to lock it in place, when disassembling, turn the measuring cup in anti-clockwise by 90° to unlock it.

5. Connect the plug to wall outlet and set Speed Selector to your desired speed. There are four setting: P, 0, 1, 2. The 1 setting is the low speed, the 2 setting is the high speed. Turn the selector to P position and hold it to pulse actuate motor for delicate chopping. Release it to return the 0 position. The Pulse mode allows you to create a burst of power for quick, efficient blending.

Note: The total operating time should not more than 3 minutes.

6. Turn the Speed Selector to 0 Position once the mixture has been blended to your desired consistency.
7. Remove the blending jar from the Motor Unit (turning the jar anti-clockwise), carefully take down the Jar Cover, then pour and serve.

CLEANING

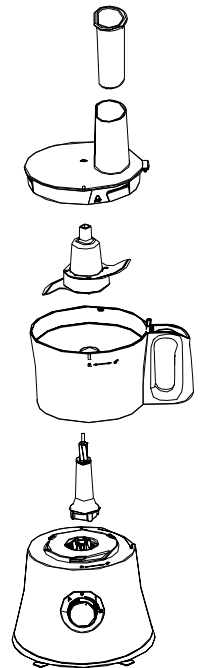
1. Disconnect the power supply before cleaning.
2. Pour a little warm water into the jar, turn and hold the speed selector to P position for a few seconds.
3. Remove the jar and rinse and rinse under running water. Remove Jar cover and measuring cup, then immerse the top cover, measuring cup in water and clean them with a soft brush, finally clean them with damp cloth.

Caution: the blade base can be disassembled for cleaning.

4. Wipe the outside of base with a damp cloth. Never immerse it in water as electric shock is possible to occur. Then dry thoroughly. Ensure the interlock area is free of food particles.

CHOPPING

1. Firstly assemble the driving shaft into the motor base, make sure it is clipped into position.
2. Place the chopping jar on the Motor Unit from the unlock position and slightly turn the chopping jar clockwise until the chopping jar locks into the lock position on the motor base. Make sure it is assembled in place correctly, otherwise the appliance will not operate.
3. Insert the “S” blade into the driving shaft in the chopping jar securely. Make sure it is locked into position.
4. Then place the prepared chopping food into the jar. The food must be cut into small size firstly (such as 2cm*2cm*6cm for beef). During chopping, you can add food through the feeding funnel with the pusher, never using food or finger to push the food into the feeding funnel.
5. Place the lid onto the jar and turn it clockwise until the tab of the lid clicks into slot in the jar handle. Make sure it is locked in position correctly, otherwise the appliance will not operate.
6. Connect the appliance to power supply and set Speed Selector to your desired speed.
7. There are four setting: P, 0, 1, 2. The 1 setting is the low speed, the 2 setting is the high speed. Turn the selector to P position and hold it to pulse actuate motor for delicate chopping. Release it to return the 0 position. The Pulse mode allows you to create a burst of power for quick, efficient blending. You can chop up to 400g of following foodstuff.



Hard substance: cheese, dried fruits, and certain vegetables (carrots, celery...),

Soft substance: certain vegetables (onions, spinach...)

Raw and cooked meat (boned and sliced)

CAUTION: The total operating time should not be more than 90 sec.

8. Turn the Speed Selector to “0” position and unplug the appliance after chopping. Open the top lid and grasp blade by its hub and remove. Unlock chopping jar by turning it in anti-clockwise away from motor base, and lift it off. Empty the processed food.

CAUTION: The “S” blade is extremely sharp, handle with care.

CLEANING

1. Disconnect the power supply before cleaning.
2. Empty the chopping jar, dismantle all detachable parts and rinse them in warm soapy water. Extreme caution must be taken when handling blade as it is very sharp. All the accessories except motor base are dishwasher safe components, but the temperature setting shall not exceed 70°C. Then dry thoroughly.
3. Wipe the outside of base with damp cloth. Never immerse it in water as electric shock is possible to occur. Then dry thoroughly. Ensure the interlock area is free of food particles

FOR A QUICK WASH UP

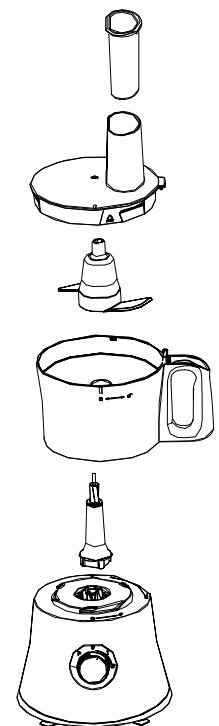
Between processing tasks, pour in some water into the chopping jar, turn and hold the speed selector to P position a few seconds for quick cleaning.

KNEADING/MIXING

1. Firstly assemble the driving shaft into the motor base, make sure it is clipped into position.
2. Place the chopping jar on the Motor Unit from the unlock position and slightly turn the chopping jar clockwise until the chopping jar locks into the lock position on the motor base. Make sure it is assembled in place correctly, otherwise the appliance will not operate.
3. Insert the plastic blade into the driving shaft in the jar securely.
4. Measure the flour with food pusher and put them into the jar. The maximum quantity of flour is 375g.
5. Place the lid onto the chopping jar and turn it clockwise until the tab of the lid clicks into slot in the jar handle. Make sure it is locked in position correctly, otherwise the appliance will not operate.
6. Insert the food pusher into the feeding funnel.
7. Add one tablespoon oil into the appliance from feeding funnel. Connect the appliance to power supply. Turn the speed selector to the “2” setting.
8. Then add water (the maximum water quantity is 225g) with food pusher from the feeding funnel slowly within 20s.

NOTE: the food pusher also can be used as measuring cup for measuring oil or water.

9. The proportion of the flour and water is 5:3. Make sure the quantity of the water shall not be more than the maximum specified water quantity.



Note: Add some more water if the processing speed slows down during operating so as to make the motor run smoothly, otherwise the motor may be damaged. During kneading/mixing, to avoid shaking, press the lid with one hand, and the other hand is holding the handle.

10. Stop the process by turning the speed selector to “0” position as soon as the pastry starts to form a ball. **CAUTION:** The total operation time is not more than 90 seconds. And minimum 2 minutes rest period must be maintained after one operation cycle. At least 30 minutes rest period must be maintained to let the appliance cool down after three operation cycles.

10. Unplug the appliance, detach the cover, firstly remove the plastic blade, then remove the dough.

Cleaning

1. Disconnect the power supply before cleaning.
2. Empty the jar and remove the lid, the plastic blade, pusher, then immerse them in water and clean them with a damp cloth or soft brush.
3. Wipe the outside of base with a damp cloth. Never immerse the motor base in water as electric shock is possible to occur. Then dry thoroughly. Ensure the interlock area is free of food particles.

BEATING AND WHISKING

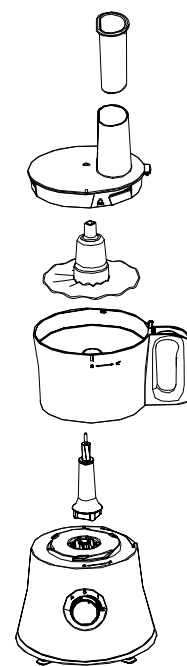
1. Firstly assemble the driving shaft into the motor base, make sure it is clipped into position.
2. Place the chopping jar on the Motor Unit from the unlock position and slightly turn the chopping jar clockwise until the chopping jar locks into the lock position on the motor base. Make sure it is assembled in place correctly, otherwise the appliance will not operate.
3. Insert the whisk into the driving shaft in the jar securely.
4. Place the ingredient into the bowl. You can use it to prepare mayonnaise, sauces, egg whites, meringues (up to 10 egg whites), and whip cream.
5. Place the lid onto the chopping jar and turn it clockwise until the tab of the lid clicks into slot in the jar handle. Make sure it is locked in position correctly, otherwise the appliance will not operate.
6. Set the speed selector to the high speed.

Note: Never use this whisk to knead dough or mix cake mixtures.

7. Do not run the appliance for more than 2 minutes per time.

CLEANING

1. Disconnect the power supply before cleaning.
2. Empty the jar and remove the lid, the whisk, pusher, then immerse them in water and clean them with a damp cloth or soft brush.
3. Wipe the outside of base with a damp cloth. Never immerse the motor base in water as electric shock is possible to occur. Then dry thoroughly. Ensure the interlock area is free of food particles.



SLICING/CHIPPING/SHREDDING

1. Firstly assemble the driving shaft into the motor base, make sure it is clipped into position.
2. Place the chopping jar on the Motor Unit from the unlock position and slightly turn the chopping jar clockwise until the chopping jar locks into the lock position on the motor base. Make sure it is assembled in place correctly, otherwise the appliance will not operate.
3. Fit the shredding blade or slicing blade or chipping blade into the disk stand, place them in the bowl.

NOTE: For assembling, first push in the no block side, then push in the other side. For disassembling the blade from the disk stand, first push out one side with no block, then push out the other side.

4. Place the lid onto the chopping jar and turn it clockwise until the tab of the lid clicks into slot in the jar handle. Make sure it is locked in position correctly, otherwise the appliance will not operate.

5. Turn the speed selector to 1 or 2 setting to start.

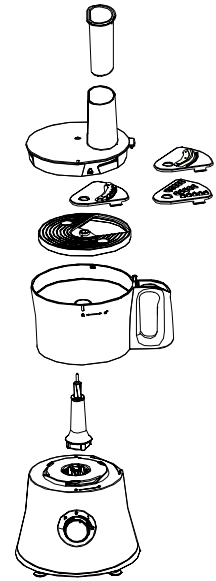
Note: the shredding/slicing/chipping disks can slice thickly-potatoes, onions, thinly-cucumbers, boot root, apples, and carrots...

5. Use the food pusher to feed food into the feeding funnel. The food shall be cut into proper size to suitable for the feeding funnel. You can slice/chip up to 1000g of food.

6. Minimum 2 minutes rest period must be maintained after one operation cycle. At least 30 minutes rest period must be maintained to let the appliance cool down after three operation cycles.

7. Turn the speed selector to “0 ” position and unplug unit after processing. Remove the blade ass’y. Unlock jar by turning it in anti-clockwise away from its base, and lift it off. Empty the processed food.

CAUTION: The blade is extremely sharp, handle with care.



CLEANING

1. Disconnect the power supply before cleaning.

2. Empty the chopping jar and remove the disk stand from the bowl, then remove the shredding/slicing/chipping blade from the disk stand, the pusher from the lid, the lid from the bowl, then immerse the lid, pusher, chopping jar, disk stand and the shredding/slicing/chipping blade in water and clean them with a soft brush. Extreme caution must be taken when handling blade as they are very sharp.

Note: For disassembling the disks from the disk stand, first push out one side with no block, then push out the other side. For assembling, first push in the no block side, then push in the other side.

3. Wipe the outside of base with cloth. Never immerse it in water as electric shock is possible to occur. Then dry thoroughly. Ensure the interlock area is free of food particles

Note: Some food may discolor the disk stand. This is normal and will not harm the plastic or effect the flavor of food. Rub with cloth dipped with vegetable oil to remove discoloration

ENVIROMENT FRIENDLY DISPOSAL



You can help protect the environment!
Please remember to respect the local regulations:
hand in the non-working electrical equipments to an
appropriate waste disposal center.