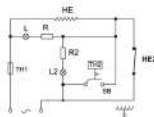


How to operate the Cooker:

- 1. Wash the Rice and put into the Aluminum pot:**
Wash the rice in another container and put into the cooker after washing. Generally, one and a half cups of water should be added per cup of rice. Do not wash the rice directly in the aluminum pot to avoid any damage.
- 2. Place Aluminum pot correctly into position:**
After ensuring that there is no foreign matter on the heating element and pot bottom, place the aluminum pot into the rice cooker. At the same time, turn the pot in clockwise and anti-clockwise direction to ensure close contact between the inner pot and heating element.
- 3. Cooking the Rice:**
Insert one end of the plug into the socket, insert the plug into the socket, press the heating button. When the Cook indicator light comes on, the cooking process has started.
- 4. Keep Warm Function:**
After the "Cook" indicator turns off, the Warm indicator light goes on. At this time the Rice Cooker automatically goes to Keep Warm mode. If keep warm function is not required, please pull out the power plug to turn off the rice cooker.
- 5. Cleaning Instructions:**
Aluminum Pot - After use, allow pot to cool down before washing.
Main Body - Unplug unit from the electrical socket, allow to cool and use a damp cloth to wipe the body. **DO NOT IMMERSSE THE MAIN UNIT IN WATER.**

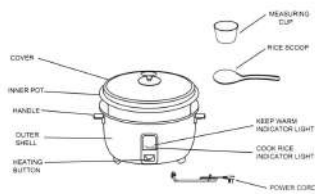
Circuit Diagram



Symbol	Part Description
1 - R1	Heating Element
2 - R2	Resistor
3 - L1	Indicator Lamp
4 - L2	Indicator Lamp
5 - SB	Switch Button
6 - TF	Thermal Fuse
7 - T1	Thermal Cut-off
8 - HE2	Keep Warm Control

1

Parts Identification



Important Safeguards:

When using electrical appliances, basic safety precautions should always be followed, such as:

1. Read instruction manual carefully before use.
2. Do not immerse cord, plug or base unit in water or other liquid.
3. Close supervision is required when any appliance is used by or near children.
4. Unplug from socket when appliance is not in use and before cleaning.
5. Allow appliance to cool before cleaning.
6. Do not use appliance with a damaged cord or plug. In case of any kind of damage or malfunction, please return appliance to service center.
7. Do not use outdoors.
8. Do not let the cord hang over the edge of the table or counter, or to touch hot surfaces.
9. Do not place on or near a hot gas stove or electric burner.
10. This appliance is not intended for use by persons (including children) with reduced physical, sensory or mental capabilities, or lack of experience and knowledge, unless they have been given supervision or instruction concerning use of the appliance by a person responsible for their safety.

2

11. Children should be supervised to ensure that they do not play with the appliance.
12. If the supply cord are damaged, it shall be Replaced by the service centre.
13. Caution must be used when moving appliance containing hot food, water or other liquids.
14. Do not use the appliance for any purpose other than intended use.
15. When in use, please lift the lid carefully to avoid hot water from scalding.
16. Do not use steel wool or any other metallic scouring pad to clean the electric pin terminals. Metal slivers can cause electric shock.

ADDITIONAL SAFEGUARDS:

1. Caution: This appliance generates heat and steam during use. Do not operate without the lid cover.
2. This appliance should only be plugged into a 220-240V electrical outlet only.
3. Always attach the plug to the rice cooker first, and then to the electrical socket.
4. When using the appliance, please ensure adequate space above and on all sides of the unit to allow for proper air circulation.

BEFORE USING FOR THE FIRST TIME:

1. Please remove all packaging material from unit.
2. Wash the lid, detachable pot, measuring cup and spoon and dry with cloth.

Instruction for use
USING THE MEASURING CUP (FOR ALL TYPES)

Raw rice by cup	Water added to the line on pot
45 cups	45-45 1/2 cups
40 cups	40-40 1/2 cups

3



Instruction Manual
Model: RM/336

