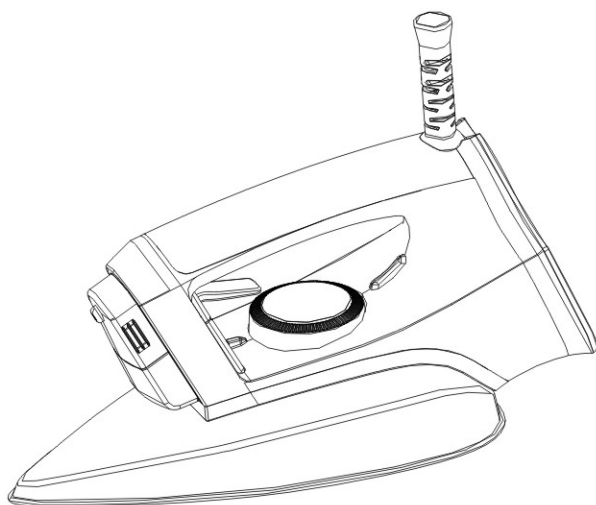


145.00 mm



DRY IRON MODEL NO.:RM/571



INSTRUCTION MANUAL

210.00 mm

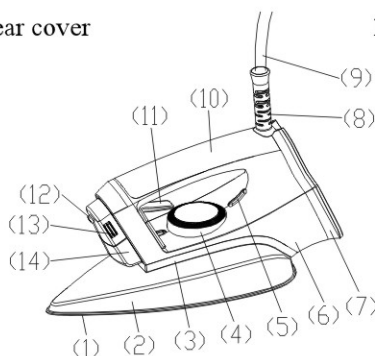
2019-3-12

Important

- Please read these instructions for use carefully in conjunction with the illustrations before using the appliance.
- Never use the appliance if it is damaged in any way.
- Take care that children cannot touch the soleplate when it is hot and they cannot pull the mains cord.
- The cord set should not be allowed to touch the soleplate when it is hot
- Never immerse the iron in water.
- Always place the iron with its back on a firm flat surface when interrupting ironing and after use. When leaving, even when only for a short while always unplug the iron.
- Keep the soleplate smooth, avoid hard contact with metal objects.
- Some parts of the iron have been slightly greased and as a result the iron might slightly smoke when connected for the first time. After a short while, however this will cease.
- Do not leave the iron unattended while it is connected to the mains supply.
- If the mains cord of this appliance is damaged, it must be replaced by the original type only.

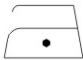

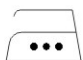

Know your iron

- | | |
|-----------------------------|---------------------------------------|
| 1. Soleplate | 8. Cord bushing |
| 2. Steel case | 9. Power cord |
| 3. Heat insulation shell | 10. Top cover |
| 4. Temperature control knob | 11. Button |
| 5. Lamp cover | 12. Nozzle |
| 6. Handle | 13. The upper cover of the water tank |
| 7. Rear cover | 14. water tank |



Ironing temperature

- Always check first if a label with ironing instructions is attached to the article to be ironed .(See table) Follow these ironing instructions in all cases.
- If ironing instructions are missing but you know the kind of fabric, then see the table for recommended ironing temperatures.

GARMENT LABEL	FABRIC TYPE	THERMOSTAT REGULATION
	synthetic	• low temperature
	silk - wool	•• medium temperature
	Cotton - linen	••• high temperature
	Fabric not to be ironed	

- The table is valid for the recommended ironing temperature.
- The table is valid for the fiber materials only.
- If some kind of finish has been applied (gloss, wrinkle, relief etc.),the textile can best be ironed at a lower temperature.
- The iron heats up quicker than it cools down. Therefore, start ironing the articles requiring the lowest temperature such as those made of synthetic fibers.
- Then progress to the higher temperatures. Finish by ironing cotton and linen.
- If the article is made of a mixture of different fibers, you must always select the lowest ironing temperature of the composition of those fibers. (E.g. an article consisting of“60%polyester and 40% cotton” should be ironed at the temperature indicated for polyester).
- If you do not know what kind(s) of fabric(s) the article has been made of, find a spot which will be invisible when wearing or using the article to try out the ironing temperature,(Always start at a low temperature and increase

to one which gives the required results).

- Iron the reverse side of synthetic materials and silk to prevent shining spots. TO prevent staining do not use the spray on silk or other delicate fabrics.

Filling with water (for spray iron only)

You can fill the water tank with normal tap water.

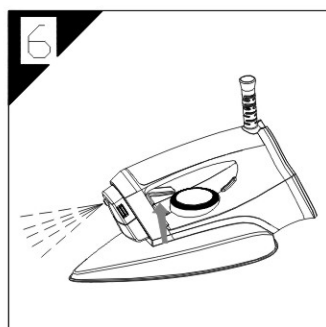
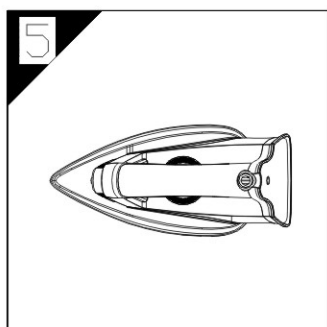
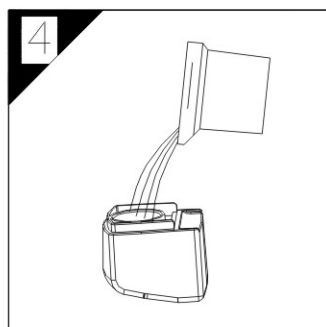
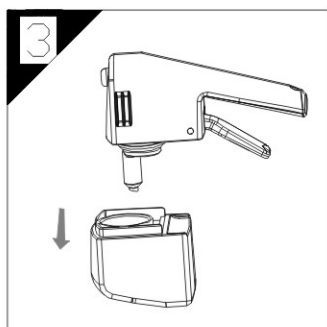
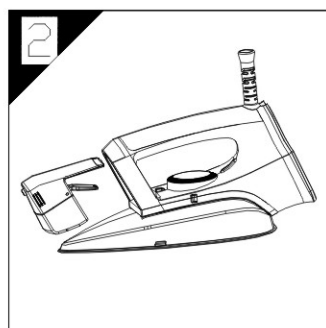
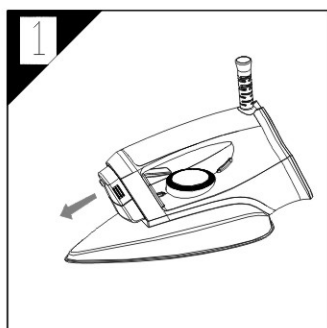
- Pull out the water tank (fig.1) and remove the spray unit (fig.2).
- Pull out the water tank (fig.3).
- Fill the water tank (fig.4).
- Replace the spray button (Click!’’)

Setting the temperature

- Set the appropriate ironing temperature instructions or in the fabric table by means of temperature dial (fig.5).
- Insert the mains plug into the wall socket. The pilot light will now come on
- When the pilot light has gone out and has come on again you can start ironing.
- The pilot light will come on from time to time during ironing. This has no effect on the ironing , so simply continue.
- If you set the temperature control to a lower setting after ironing at a high temperature, do not recommence ironing before the pilot light comes on again.

Ironing tips

- Iron with a straight back, Adjust the height of the ironing board so that the handle of the iron is on the same level as your elbow.



- Pressing onto the iron is not necessary. Provided that the temperature has been set correctly. Ironing is most effective if the laundry is slightly damp.

Spraying (for spray iron only)

- At any temperature by pushing on the spray button a couple of times the laundry can be damped down (fig.6)

When finished ironing

- Place the iron on its rear side.
- Set the temperature dial to position "MIN".
- Remove the mains plug from the wall socket
- Let the iron cool down for at least 30 minutes.
- You can wind up the mains cord and then fix cord clip.
- Store the iron standing on its rear side to prevent damage soleplate.

Cleaning

- Before cleaning remove the mains plug from the wall socket, let the iron to cool down sufficiently.

